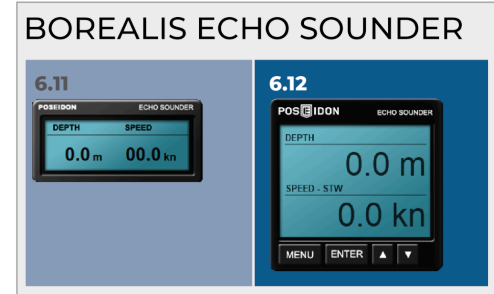
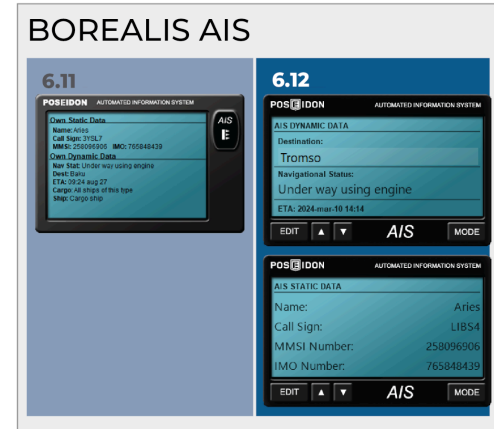
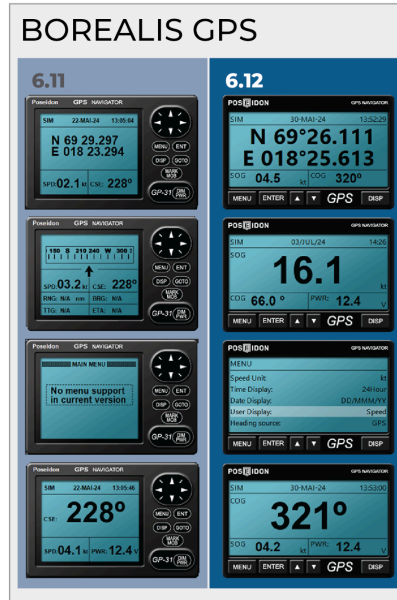


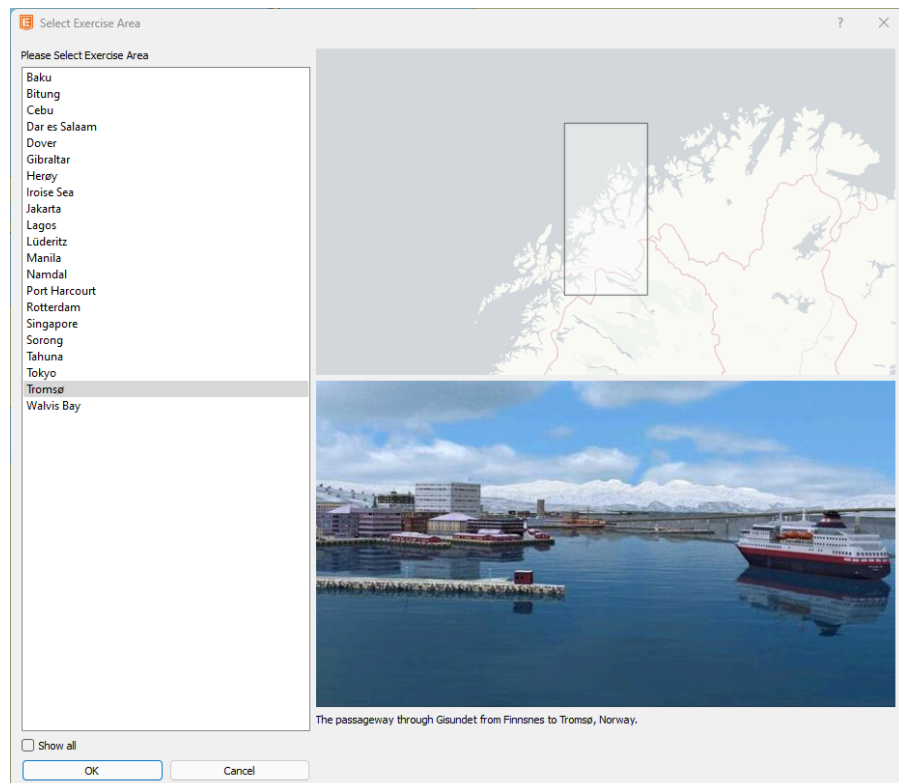
## Borealis 6.12 - changelog

### New features

GPS, AIS and Echo Sounder have been graphically updated, and now have the ability to further customize the display screen by changing displayed metrics



PEM sailing areas now display a preview of the area selected



## Maintenance and enhancements

- Added support for MCC 1208-FS modules
- Borealis 6.12 installers updates
- Max wind speed is now default 50
- Fixed an issue where Maris radar could show a DirectX error message on startup
- Improved Borealis Debrief load performance
- Tromsø Sailing area has been updated
- Improved Start Exercise dialog in PEM

## Bugfixes

- Fixed an issue where PEM would crash when loading exercise with OS 1 deleted
- PVC now display the correct CP mode
- Bollards are no longer missing in PMM
- Fixed an issue in PEM that disabled course editing
- You can now dock in Rotterdam
- Fixed an issue causing Borealis Debrief to crash when loading a debrief file